

USER MANUAL

SOLLUX Solar Spike Light (Remote Control)



THANK YOU FOR YOUR PURCHASE
PLEASE READ THESE INSTRUCTIONS CAREFULLY PRIOR TO INSTALLATION / MAINTENANCE

SPECIFICATIONS

Wattage: 25W // 60W // 120W

Lamp: In-built Sanan 5730 LEDs (120° Beam Angle)

Colour Temperature: 6500K (Daylight)

Lumen Output: 500 lm // 1200 lm // 2400 lm

LED Life Expectancy: up to 50,000 hours

Sensor: Light Sensor

IP Rating: IP67

Battery Type: Lithium 36250 LifePO4 (replaceable)

25W = 3.7V 6AH, 60W = 3.7V 820AH, 120W = 6.4V 30AH

Battery Charge Time: 5-6 hours (approx.)

Solar Panel: Polycrystalline 25W = 6V 10W, 60W = 6V 18W, 120W = 12V 30W

Max Illumination Time at Full Charge: 12-14 hours (varies by function)

Illumination Area: 25W = 80 sq.m // 60W = 120 sq.m // 120W = 150 sq.m (approx.)

Cable Length: Solar Panel = Over 4m // Flood Light = 0.3m approx. (plug & play adaptor)

Materials: Aluminium Alloy, Die Cast Aluminium, Tempered Glass

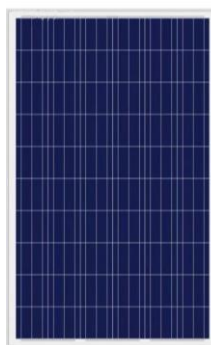
Mounting: Surface mount (adjustable brackets), spike mount

Remote Control: Infrared (up to 20m range) – requires 2 x AAA batteries (included)

Working Temperature: -25°C to 60°C

Included: Flood Light, Solar Panel & Bracket (packed separately), 4 Spikes with end caps (2 x solar panel & 2 x floodlight), Solar Panel and Floodlight Spike Fixings, 2 x Allen Key, Remote Control & Batteries

ACCESSORIES: 5m extension cable available



✓✓✓
**3 YEAR
GUARANTEE**
see website for
more details

! WARNINGS !

- If a fitting is found to be damaged, cease use immediately.
- The unit may get warm whilst on for a period of time.
- Always take care when installing your solar light, especially when mounting it in high places.
- Ensure the fitting is mounted out of range of head height to avoid injury.
- Fitting must be mounted to a solid surface
- This Solar Light will not charge correctly if the panel is behind glass or artificial light is used.

CLEANING & MAINTENANCE:

Occasional cleaning and care are recommended for this product. Wipe with a soft, slightly damp cloth to remove any surface dirt. To maintain efficiency, specifically clean the solar panel and glass flood light lens on a regular basis. Also, keep the solar panel free of debris and snow to prevent reduced battery life or malfunction. Do not use abrasive cleaners or a lot of water as this could damage the fitting. Please refer to our website for more information on the best way to clean different materials.

RETURNS:

If purchased from a 3rd party, please contact your supplier. If purchased direct, contact us by phone or email:

Exterior Lights UK Ltd Tel: +44 1689 606342

Email: sales@exteriorlights.co.uk

Our full returns policy is available on our website.

Waste Electrical Products should not be disposed of with household waste. Please check with your local authority or contact us for more information. Please recycle packaging whenever possible.

Producer Registration Numbers: WEE/KC3440XY / BPRN0843

Full product range & more information: www.exteriorlights.co.uk

SOLLUX TECHNOLOGY:

The Sollux is a highly efficient, high output solar light with high capacity Lithium Ion batteries and a fast charging Polycrystalline solar panel. This means that even on partially cloudy and rainy days, it will re-charge efficiently. The high battery capacity gives enough power for multiple nights, particularly when the tier option is used. The high lumen light output is bright enough to illuminate areas of up to 150m².

INSTALLATION:

The Sollux is designed to be mounted into soft ground via the 2x aluminium spike supports, with the solar panel located up to approximately 4.5m away to ensure maximum light exposure. The panel can be surface mounted or spike mounted into soft ground. Ideal as an up light for larger trees. A 5m extension cable is available to extend the distance between solar panel & flood light – this may increase the charging time slightly.

Location – It is important that the installation location of the solar panel is carefully considered, avoiding shady areas. The best position for the solar panel is south facing; however, it will still charge the battery when facing in other directions, especially when in full sunshine. Ensure there are no other lights which could interfere with the light sensor, imitating daylight.

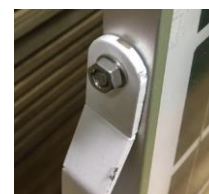
1. Plug the flood light into the solar panel and secure in place by screwing on and fully tightening the cap.
2. Experiment with desired position of both the flood light and solar panel, ensuring there is enough slack in the cable to safely hook up when they are mounted in the desired location.
3. Once happy with the positioning, follow relevant installation method below:

SPIKE MOUNT

- a. Attach the floodlight spikes to the floodlight with the socket screws and lock washers provided (in flood light) – see image.
- b. Dampen the soil in desired location and use a rubber mallet to securely mount the spikes (evenly). End caps already attached.
- c. Attach the panel spikes to the solar panel with the socket screws and lock washers provided (attached to panel) – see image. Note: washer and nut to be located on outside of spike.
- d. Position the solar panel horizontally so that the spikes protrude higher than the panel.
- e. Dampen the soil in desired location and use a rubber mallet to securely hammer the spikes into the ground, alternating between spikes. End caps already attached.

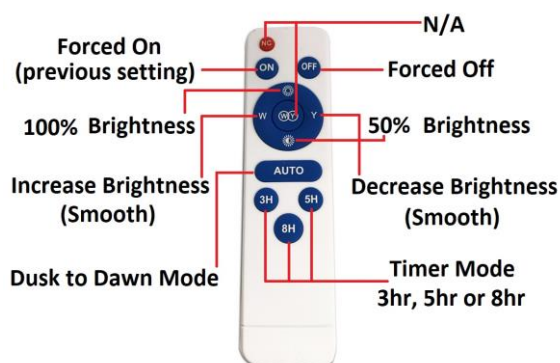
SURFACE MOUNT (Panel Only)

- a. Mark the mounting holes of the solar panel bracket in the desired location.
 - b. Drill out the holes and use relevant screws / plugs for the mounting surface (not included) and secure the solar panel bracket in place.
 - c. Attach the solar panel to the bracket with the 2 x socket screws, washer and nut provided (shorter screws located in battery pack to substitute longer panel screws). Position washer and nut on outside of bracket – hold the allen key inside the socket screw and tighten the nut with a spanner.
4. Adjust the angle of the solar panel & flood light, as desired, and tighten into position with the allen keys provided. Adjust solar panel to approx. 45 degrees for maximum charge effectiveness.
 5. Check the waterproof cable connector is secure and cable is in a safe position.
 6. Press the dusk to dawn button on the remote to activate the dusk to dawn setting & test the flood light (batteries will need to be inserted).



MODES / SETTINGS:

NOTE: When the remote is turned “ON”, the previous setting will be remembered. Timer setting will start instantly, regardless of daylight. Digital Display of Battery Charge Percentage.



Before use, insert the batteries into the remote control.

For first use, press the “AUTO” button on the [solar light control panel](#) to activate the light and remote.

To switch between modes, select the relevant button for the desired setting after installation.

Modes can be changed via the remote control, up to 20m.

Override “ON” button will remember the previous mode set, and “OFF” will be overruled the following evening.

Remote control can command more than one fitting in range.

Infra-red sensor is located in the bottom left corner of the flood light lens.

Full product range & more information: www.exteriorlights.co.uk