

# INSTRUCTIONS

## AlvaLED GUI0 TWIN Spike Light – 240v

All finishes



### WARNINGS



PLEASE READ THESE INSTRUCTIONS CAREFULLY PRIOR TO INSTALLATION / MAINTENANCE

- If a fitting is found to be damaged, cease use immediately.
- This is a Class I product and must be earthed.
- This unit must be fitted by a competent person – if in doubt consult a qualified electrician.
- Install in accordance with IEE wiring regulations and current Building Regulations.
- To prevent electrocution, switch off mains supply before installing or maintaining this fitting. Ensure other persons cannot restore the electrical supply without your knowledge.
- This light fitting should be connected to a circuit with a 30Ma RCD fitted.
- If replacing an existing fitting, make a careful note of the connections.
- When changing the bulb, always switch off at the mains & allow the bulb to cool before handling – **LAMP WILL GET HOT WHEN IN USE.**
- All connections should be made as watertight as possible to avoid electrical shortage.
- Always use the correct type & wattage of bulb. Never exceed the wattage stated.
- The unit may get warm whilst on for a period of time.
- **DO NOT INSTALL INTO THE GROUND BY PUSHING THE HEAD OF THE PRODUCT**



**Voltage:** 220 - 240v 50Hz

**Max Wattage:** 20w per spotlight

**Bulb Holder:** GU10 x 2

**IP Rating:** IP65

**Cable Length:** 3 core rubber cable 0.75mm (approx. 1m) per spotlight

**Head:** Adjustable

**Materials:** Aluminium & Tempered Glass

**Finishes:** Black (Powder Coated) / Titanium & Cocoa (Anodised)

**Mount:** 4 fin ground spike with 40cm pole

**Included:** 2 x Spotlights, riser pole, ground spike, allen key, 2 x cable ties



✓✓✓  
**3 YEAR  
GUARANTEE**  
see website for  
more details

### SILICA GEL & O-RINGS (DO NOT REMOVE):

A small pack of silica gel has been included with this spike light, which is to be located inside the head with the bulb holder. This should **not** be removed. Condensation inside the spike light is inevitable due to the heat generated from lamps and cold weather conditions, especially if installed on a damp day. The pack of silica gel will collect the moisture inside the fitting, preventing this. It is recommended that the silica gel is replaced when the light bulb is replaced, if not before, and the white rubber o-ring checked. This fitting should not be used if there are any signs of damage.

### CLEANING:

Occasional cleaning and care is recommended for this product. Please refer to our website for the best way to clean different materials.

### RETURNS & DISPOSAL:

If purchased from a 3<sup>rd</sup> party, please contact your supplier.

If purchased direct, contact us by phone or email:  
Exterior Lights UK Ltd

Tel: 01689 606342

Email: [sales@exteriorlights.co.uk](mailto:sales@exteriorlights.co.uk)

Our full returns policy is available on our website.

**Waste Electrical Products should not be disposed of with household waste.** Please check with your local authority or contact us for more information. Please recycle packaging when possible. **Producer Registration Number: WEE/KC3440XY**

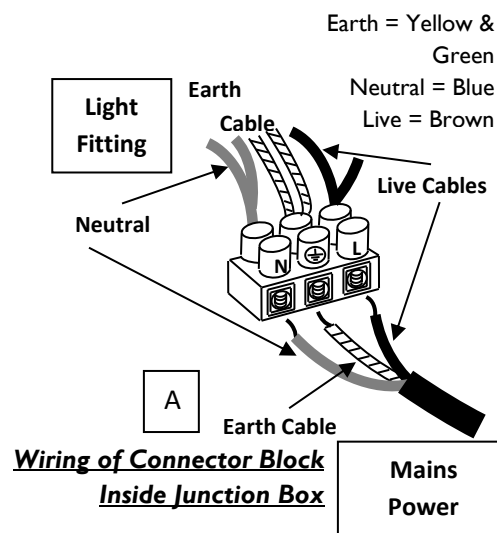
Full product range & more information: [www.exteriorlightsuk.co.uk](http://www.exteriorlightsuk.co.uk)

## WIRING / CONNECTION:

Always use a waterproof Junction Box to connect the fittings to the mains power supply.

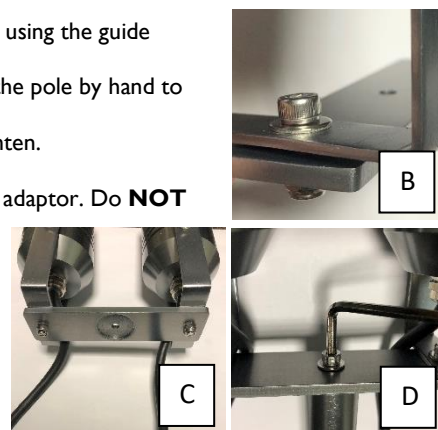
**IMPORTANT:** Cable should be laid inside armoured conduit or piping to protect from water-logging, chemicals found in soil and damage. If buried, it should be buried to at least 0.5m below ground to reduce damage risk. If this method is not used, cable warranty will be void.

1. Decide on the positioning of the spike light. See below for mounting installation.
2. Locate the mains electrical supply (pre-installed armoured cable).
3. Connect both spotlights to the mains supply via a waterproof junction box (see diagram A for wiring information).
4. Ensure all terminals of the connector block are secure with no stray wires and that the connection is watertight.
5. Cable supplied with fittings are not armoured, therefore it should be laid inside armoured conduit or hooked up safely out of reach in protective piping.
6. Install lamp (see below).
7. Once fully installed, turn on the mains power.



## MOUNTING:

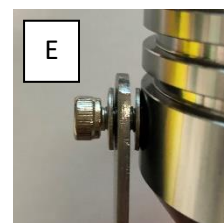
1. Tilt the spotlight heads to create plenty of room between the head and twin adaptor.
2. Remove the socket screw, locknut and washers from the adaptor with the allen key provided.
3. Attach each head to the top of the adaptor (smooth side) with the removed screws, washers and nuts, facing away from each other to leave a large gap in the centre (see pics B & C). These can be adjusted later by loosening the socket screws slightly. **TIP:** for ease of loosening / tightening screws (due to little clearing for the allen key) hold the socket screw securely with the allen key and tighten the nut with an 8mm spanner.
4. Remove the socket screw and washer from the pole, place the adaptor on top of the pole using the guide underneath the adaptor and attach with the socket screw / washer by hand.
5. Place the allen key inside the socket screw of the pole to hold firmly in position and turn the pole by hand to tighten fully (see pic D).
6. Screw the threaded 4 fin ground spike to the bottom of the pole by hand and securely tighten.
7. Dampen the ground in the area where the fitting is to be installed.
8. Carefully, push the spike into the ground to the desired depth with the centre of the twin adaptor. Do **NOT** put pressure on the spotlight heads.
9. Gently compact the earth around the spike to ensure the spike is mounted firmly in the ground and does not move from side to side.
10. Adjust the position of the spotlights heads if desired and ensure the locknuts are securely fastened.
11. If preferred, cable tie the cables to the back of the pole, one under the twin adaptor (top of pole) and one just above the ground spike.
12. Once fully installed, turn on the mains power.



## ADJUSTING THE SPOTLIGHT HEAD:

The head can be adjusted and set at various angles via the U Bracket. If this is too secure to adjust, follow the following steps:

1. Support the head and slightly loosen the 2 x socket screws found on each side of the U Bracket using the allen key provided by turning anti-clockwise – one turn should be enough to allow the head to move up and down (**do not fully remove**).
2. Angle the head in the desired position and tighten the loosened screws to secure in place.
3. If a screw becomes fully removed, return into the outer side of the bracket with a washer on each side as per image (C).



## INSTALLING / CHANGING LAMP:

- Unscrew the cap of the spotlight by hand (anti-clockwise).
- Push in the GU10 using a push and twist action (clockwise) – note the bulb holder will be greased.
- Ensure silica gel pack is present (change if damp).
- Ensure o-ring is present on the male thread of the body and is not twisted.
- Replace cap and tighten securely by hand (clockwise).