

Bodium (15W - 70W)

⚡ 220-240V ~ 50/60Hz

SELV 60

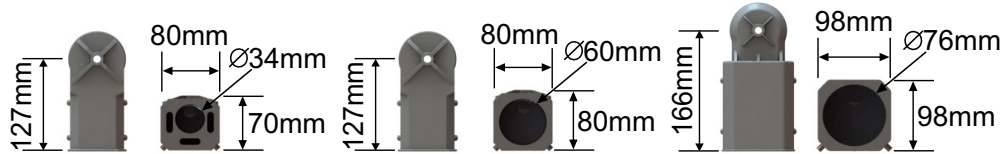
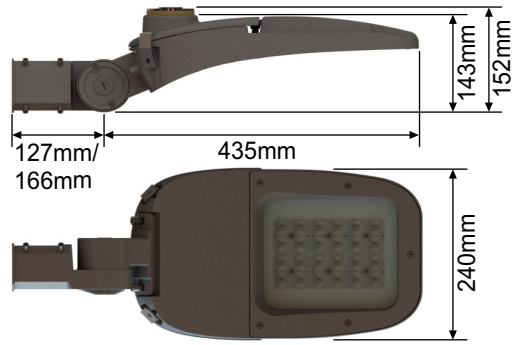
IP65

IK08 (Glass Only)



GIS78B1

Power (W)	Standard	Nema	AstroDim	Windage - Surface (m ²)
15	6	6	6	0.1044m ²
20	6	6	6	0.1044m ²
25	6	6	6	0.1044m ²
30	6	6	6	0.1044m ²
40	6	6	6	0.1044m ²
50	6	6	6	0.1044m ²
60	6	6	6	0.1044m ²
70	6	6	6	0.1044m ²



1

2

3

4 Nema / AstroDim

5

6 Standard / Nema / AstroDim

7a Single Pole Mount

7b Double Pole Mount / Triple Pole Mount

8 Led Module Access Screws

Not supplied with luminaire:

For Example: IP junction box / terminal block. If in doubt seek advice from qualified electrician.

i1 Preparation of the ends of conductors: Wire ends stripped to the length 7mm - 8mm. Add ferrules (for 1.5mm² mini wires) to the wires if they are stranded.

i2 Terminal block specified:

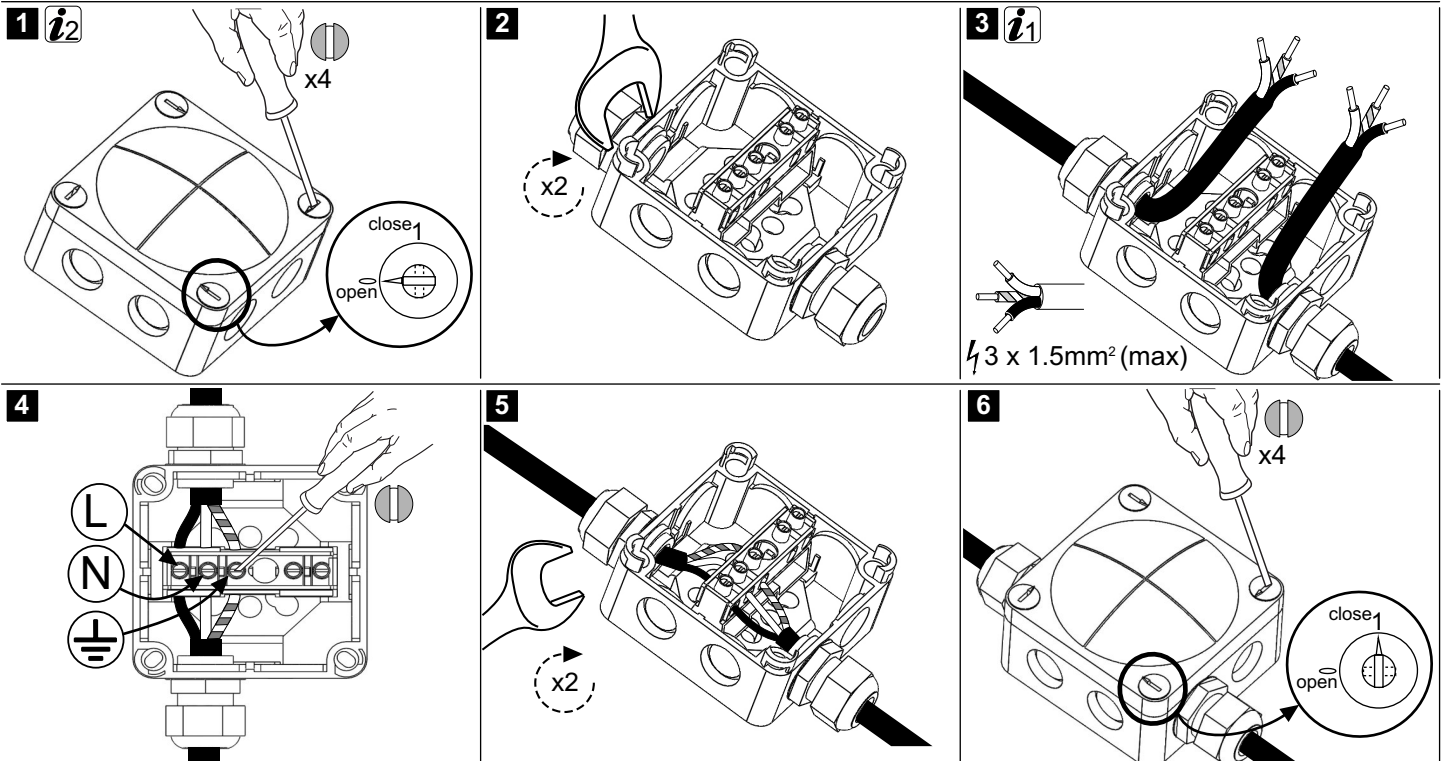
- Terminal block specified:
- The type of terminals: Screw.
- Number of terminals: 3
- Rated voltage: 450V
- Rated connecting capacity: 16A to EN60598 and 24A to EN60998



Example:

Box: WISKA COMBI 308/5/S

Cable Gland x2: WISKA ESKVM20



Not supplied with luminaire:

For Example: Terminal block fused cut out. If in doubt seek advice from qualified electrician.



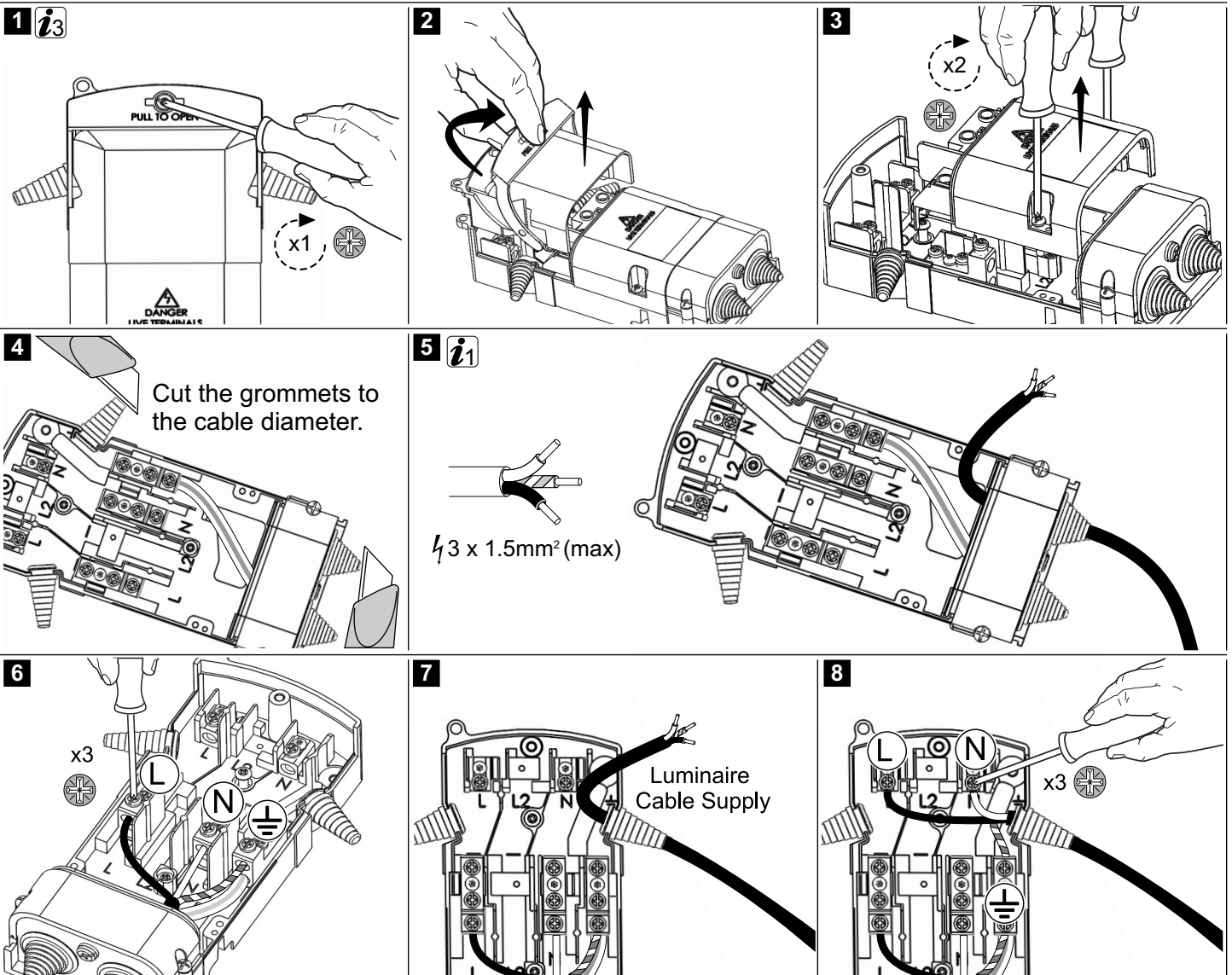
i1 Preparation of the ends of conductors: Wire ends stripped to the length 7mm - 8mm. Add ferrules (for 1.5mm²) to the wires if they are stranded.

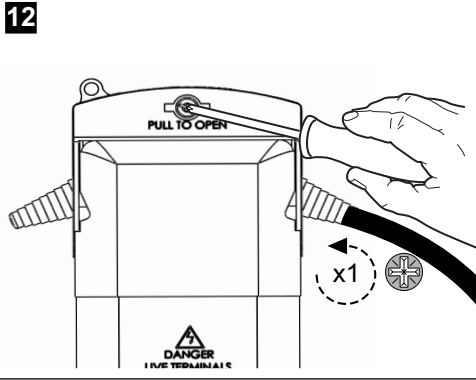
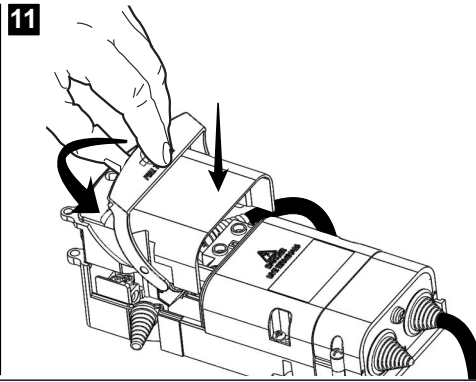
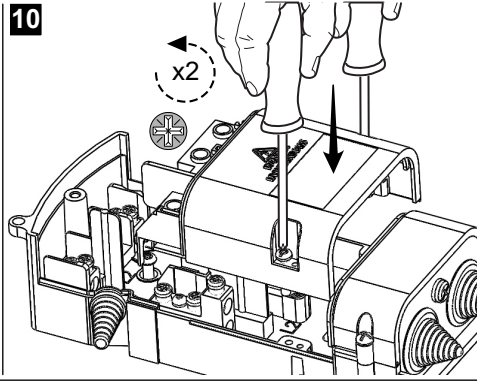
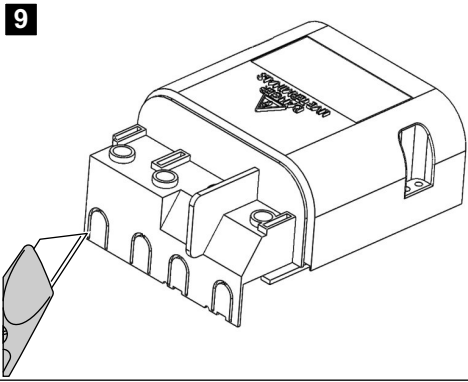
i3 Terminal block specified:

- Designed and tested in accordance with BS 7654:1997 and IEC/EN 60947-Part 1
- Detachable terminal block in extension trough facilitates termination of heavy duty cables
- Electroplated brass terminal blocks accept conductors up to 25mm²
- Number of terminals: 3
- The type of terminals: Screw
- Rated voltage: 230V
- Rated connecting capacity: 25A

Example:

FHD-0005 Single and double pole cut outs.







Important - Safety



- Maximum Mounting Height 10m.
- Between The Control Conductor And Low Voltage Supply The Maintained Insulation Level Is Basic.
- Tested To BS EN 60598-2-3
- Ta -20°C ... 25°C
- Failed Light Source Should Be Replaced Promptly Or The Circuit Switched Off To Avoid Possible Damage To Control Gear.
- The Light Source Contained In This Luminaire Shall Only Be Replaced By The Manufacturer Or Service Agent Or A Similar Qualified Person.
- Terminal Block Not Included. Installation May Require Advice From A Qualified Person.

Circuit Breaker Type	10A (B)	16A (B)	25A (B)
F15W / F20W	23	36	57
F25W / F30W	18	28	43
F40W / F50W	8	16	20
F60W / F70W	8	12	20



- Ensure No Cables Are Trapped When Luminaire Is Closed.
- Type 'Y' Supply Cord:
 - Replacement Is Intended To Be Made By The Manufacturer, Its Service Agent Or Similar Qualified Person.
- Before Carrying Out Any Servicing On These Luminaires, Ensure That The Mains Supply Is Fully Isolated.
- Disconnect The Luminaire Before Insulation Testing Of The Installation
- Any Alterations To The Luminaire, Will Need To Be Confirmed With Exterior Lights UK Ltd. If Alterations Have Been Carried Out To The Luminaire Without Confirmation The Luminaires Safety & Warranty Will Be At Risk.



Do Not Stare At
The Operating
Light Source

The Luminaire Should Be Positioned So That Prolonged Staring Into The Luminaire At A Distance Closer Than 1.25m Is Not Expected.

